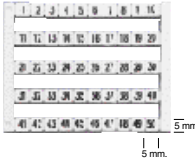


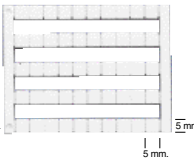
Ray Klemens Aksesuarları
Feed-through Terminal Accessories

Dekafix (Klemens Etiketi) / Marking Tags

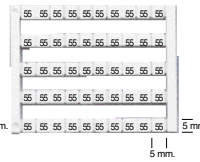
DY5 Tip / DY5 type



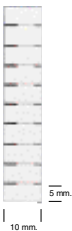
DB5 Tip / DB5 type



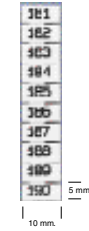
DYO 5 Tip / DYO 5 type



DB 10/5 Tip / type



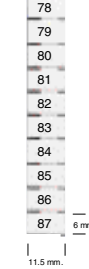
DO 10/5 Tip / type



DB 10/6 Tip / type



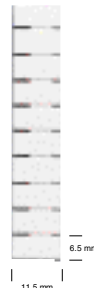
DO 10/6 Tip / type



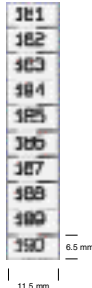
DY 10/6,5 Tip / type



DB 10/6,5 Tip / type



DO 10/6,5 Tip / type



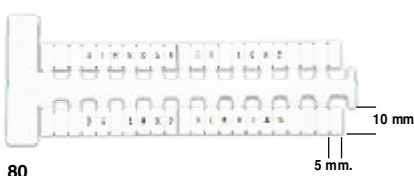
DG 6/5 Tip / type



DG 7/5 Tip / type



DG 10/5 Tip / type



Tip/Type	Açıklama / Description	Sip.No./Cat. No.	Stk./Qty.
DY 5	Standart baskılı / Standart print	505 - - -	500
DYO 5	Özel baskılı / Special print	505 650	500
DB 5	Baskısız / Without print	505 850	500
DO 10/5	Özel baskılı / Special print	505 710	500
DB 10/5	Baskısız / Without print	505 910	500
DO 10/6	Özel baskılı / Special print	505 715	500
DB 10/6	Baskısız / Without print	505 915	500
DY 10/6,5	Standart baskılı / Standart print	505 - - -	500
DO 10/6,5	Özel baskılı / Special print	505 720	500
DB 10/6,5	Baskısız / Without print	505 920	500
DG 5/6	Baskısız / Without print	505 330	400
DG 10/5	Baskısız / Without print	505 310	440
DG 10/6	Baskısız / Without print	505 320	360
DG 7/5	Baskısız / Without print	505 340	440

Tip/Type	Açıklama / Description	Sip.No./Cat. No.	Tip/Type	Açıklama / Description	Sip.No./Cat. No.
DY 5	0	505 000	DY 5	H	505 067
DY 5	1	505 001	DY 5	I	505 068
DY 5	2	505 002	DY 5	J	505 069
DY 5	3	505 003	DY 5	K	505 070
DY 5	4	505 004	DY 5	L	505 071
DY 5	5	505 005	DY 5	M	505 072
DY 5	6	505 006	DY 5	N	505 073
DY 5	7	505 007	DY 5	O	505 074
DY 5	8	505 008	DY 5	P	505 075
DY 5	9	505 009	DY 5	Q	505 076
DY 5	10	505 010	DY 5	R	505 077
DY 5	1-10	505 020	DY 5	S	505 078
DY 5	11-20	505 021	DY 5	T	505 079
DY 5	21-30	505 022	DY 5	U	505 080
DY 5	31-40	505 023	DY 5	V	505 081
DY 5	41-50	505 024	DY 5	W	505 082
DY 5	10-100	505 030	DY 5	X	505 083
DY 5	1-50	505 040	DY 5	Y	505 084
DY 5	51-100	505 041	DY 5	Z	505 085
DY 5	101-150	505 042	DY 5	L1	505 090
DY 5	151-200	505 043	DY 5	L2	505 091
DY 5	201-250	505 044	DY 5	L3	505 092
DY 5	251-300	505 045	DY 5	RSTN ↓	505 093
DY 5	301-350	505 046	DY 5	Mp	505 094
DY 5	351-400	505 047	DY 5	+	505 095
DY 5	401-450	505 048	DY 5	-	505 096
DY 5	451-500	505 049	DY 5	±	505 097
DY 5	501-550	505 050			
DY 5	551-600	505 051			
DY 5	601-650	505 052	DY 10/6,5	1-10	505 201
DY 5	651-700	505 053	DY 10/6,5	11-20	505 202
DY 5	701-750	505 054	DY 10/6,5	21-30	505 203
DY 5	751-800	505 055	DY 10/6,5	31-40	505 204
DY 5	801-850	505 056	DY 10/6,5	41-50	505 205
DY 5	851-900	505 057	DY 10/6,5	51-60	505 206
DY 5	901-950	505 058	DY 10/6,5	61-70	505 207
DY 5	951-999	505 059	DY 10/6,5	71-80	505 208
DY 5	A	505 060	DY 10/6,5	81-90	505 209
DY 5	B	505 061	DY 10/6,5	91-100	505 210
DY 5	C	505 062			
DY 5	D	505 063			
DY 5	E	505 064			
DY 5	F	505 065			
DY 5	G	505 066			

DG 10/6 Tip / type



Kablo Kodlama Elemanları (KODSIS) / Cable Marking Sleeves



İzolasyon Dış Çapı / Ins.Ext. Diameter
2.4 4.4 mm²

Kablo Kesiti / For Conductors of
0.75 4 mm²



İzolasyon Dış Çapı / Ins.Ext. Diameter
4.0 8.5 mm²

Kablo Kesiti / For Conductors of
4 16 mm²



KE 1

Kablo Kesiti / For Conductors of
0.75 1.5 mm²



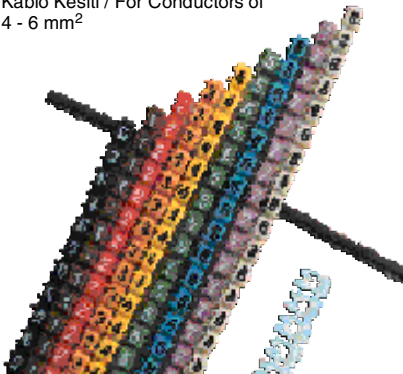
KE 2

Kablo Kesiti / For Conductors of
1.50 2.5 mm²



KE 3

Kablo Kesiti / For Conductors of
4 - 6 mm²



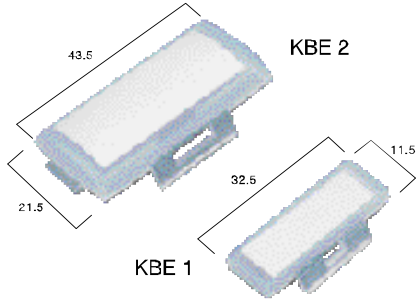
Malzeme : KG 1 - KG 2 için elastiki plastik PVC, alevlenmeye mukavim
KE 1 - KE 2 için Polyamid 6.6
Çalışma Sıcaklığı : -30°C ile +70°C
Her pakette yalnız bir cins harf, rakam veya işaret vardır.

Material : Flexible Plastic PVC for KG 1 - KG 2 (Resistant to inflammation).
Polyamide 6.6 for KE 1 - KE 2.
Ambient Temperature : -30° C and + 70° C
Every packet contains only one type of letter, number or sign.

Tip Type	Kablo Kesiti mm ² For Conductors mm ²	Miktar Quantity
KG1	0,75 - 4	100
KG2	4 - 16	50
KE1	0,75 - 1,5	500 (harfler için/for letters 200)
KE2	1,5 - 2,5	500 (harfler için/for letters 200)
KE3	4 - 6	500 (harfler için/for letters 200)

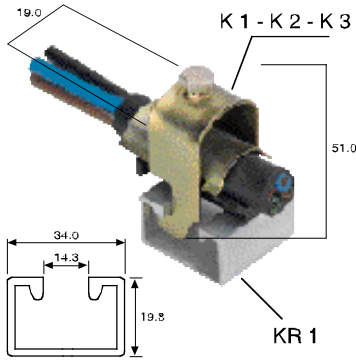
	Karakter Character	Kapalı Tip / Closed Type			Açık Tip / Open Type			
		KG1	KG2	Renk Color	KE1	KE2	KE3	Renk Color
Rakamlar Numbers	0	515 000	516 000	■	517 000	518 000	519 000	■
	1	515 001	516 001	■	517 001	518 001	519 001	■
	2	515 002	516 002	■	517 002	518 002	519 002	■
	3	515 003	516 003	■	517 003	518 003	519 003	■
	4	515 004	516 004	■	517 004	518 004	519 004	■
	5	515 005	516 005	■	517 005	518 005	519 005	■
	6	515 006	516 006	■	517 006	518 006	519 006	■
	7	515 007	516 007	■	517 007	518 007	519 007	■
	8	515 008	516 008	■	517 008	518 008	519 008	■
	9	515 009	516 009	■	517 009	518 009	519 009	■
Harfler Letters	A	515 010	516 010	■	517 010	518 010	519 010	■
	B	515 011	516 011	■	517 011	518 011	519 011	■
	C	515 012	516 012	■	517 012	518 012	519 012	■
	D	515 013	516 013	■	517 013	518 013	519 013	■
	E	515 014	516 014	■	517 014	518 014	519 014	■
	F	515 015	516 015	■	517 015	518 015	519 015	■
	G	515 016	516 016	■	517 016	518 016	519 016	■
	H	515 017	516 017	■	517 017	518 017	519 017	■
	I	515 018	516 018	■	517 018	518 018	519 018	■
	J	515 019	516 019	■	517 019	518 019	519 019	■
	K	515 020	516 020	■	517 020	518 020	519 020	■
	L	515 021	516 021	■	517 021	518 021	519 021	■
	M	515 022	516 022	■	517 022	518 022	519 022	■
	N	515 023	516 023	■	517 023	518 023	519 023	■
	O	515 024	516 024	■	517 024	518 024	519 024	■
	P	515 025	516 025	■	517 025	518 025	519 025	■
	Q	515 026	516 026	■	517 026	518 026	519 026	■
	R	515 027	516 027	■	517 027	518 027	519 027	■
	S				517 028	518 028	519 028	■
	T				517 029	518 029	519 029	■
	U	515 030	516 030	■	517 030	518 030	519 030	■
	V	515 031	516 031	■	517 031	518 031	519 031	■
	W	515 032	516 032	■	517 032	518 032	519 032	■
	X	515 033	516 033	■	517 033	518 033	519 033	■
	Y	515 034	516 034	■	517 034	518 034	519 034	■
	Z	515 035	516 035	■	517 035	518 035	519 035	■
Genel İşaretler Zeichen / Signs	Mp	515 040	516 040	■	517 040	518 040	519 040	■
	S	515 041	516 041	■				■
	T	515 042	516 042	■				■
	+	515 043	516 043	■	517 043	518 043	519 043	■
	-	515 044	516 044	■	517 044	518 044	519 044	■
	↓	515 045	516 045	■	517 045	518 045	519 045	■
	(515 046	516 046	■	517 046	518 046	519 046	■
	.	515 047	516 047	■	517 047	518 047	519 047	■
	/	515 048	516 048	■	517 048	518 048	519 048	■

Kablo Etiketleri / Cable Markers



Tip Type	Sipariş No. Cat. No.	Ölçü Dimension	Max. Kablobağı Genişliği Max. Cable Tie Width	Miktar Qty.
KBE 1	520 110	11.5 x 32.5	4.8 mm	100
KBE 2	520 120	21.5 x 43.5	9.8 mm	100

Kablo Kroşeleri ve Kroşe Rayı / Cable Clamps & Cable Clamp Rail



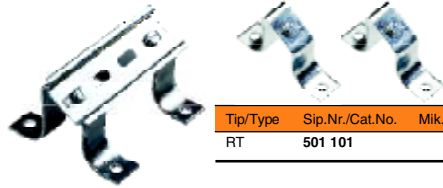
Tip Type	Sipariş No. Cat. No.	Ölçü (mm) Dimension (mm)	Max. Kablobağı Genişliği Min. & Max. Connection Dia	Miktar Qty.
K 1	510 110	19 x 51	8 - 12 mm	25
K 2	510 120	22.5 x 50	11 - 18 mm	25
K 3	510 130	28.5 x 55	12 - 23 mm	25

Kablo Kroşe Rayı / Cable Clamp Rail

Tip Type	Sipariş No. Cat. No.	Ölçü (mm) Dimension (mm)	Miktar Qty.
KR 1	510 500	20 x 35	1 m

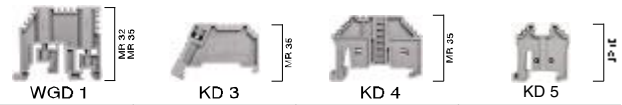
501 101

Ray Taşıyıcı / Mounting Rail Support



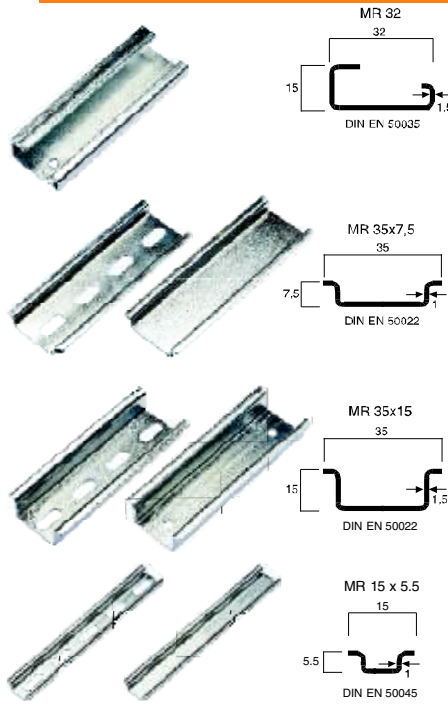
Tip/Type	Sip.Nr./Cat.No.	Mik./Qty.
RT	501 101	25

Durdurucu / End Bracket



Tip/Type	Sip.Nr./Cat.No.	Mik./Qty.
Gri / Grey	495 039	25
Bej / Beige	495 030	25

Montaj Rayları / Mounting Rails



Tip Type	Sipariş No. Cat. No.	Birim Uzunluk Unit Length	Miktar Qty.
MR 32	500 101	1 m	10

Tip Type	Sipariş No. Cat. No.	Birim Uzunluk Unit Length	Miktar Qty.
MR 35 x 7,5	500 601	1 m	100
MR 35 x 7,5	500 602	1 m	100
MR 35 x 7,5	500 603	2 m	20
MR 35 x 7,5	500 604	2 m	20
MR 35 x 7,5	500 605	30 cm	20

Tip Type	Sipariş No. Cat. No.	Birim Uzunluk Unit Length	Miktar Qty.
MR 35 x 15	500 606	1 m	10
MR 35 x 15	500 607	1 m	10
MR 35 x 15	500 608	2 m	50
MR 35 x 15	500 609	2 m	50

Tip Type	Sipariş No. Cat. No.	Birim Uzunluk Unit Length	Miktar Qty.
MR 15 x 5.5	500 610	1 m	50
MR 15 x 5.5	500 611	1 m	50
MR 15 x 5.5	500 612	2 m	50
MR 15 x 5.5	500 613	2 m	50

Modüler Grup Etiketleri / Modular Group Markers

ME serisi modüler etiketler, klemens gruplarının kodlanması ve tanımlanması için farklı çözümler sunmaktadır. KD 4 tipi vidasız durdurucu üzerine takılabilen modüler etiketler 3 farklı boyda tasarlanmıştır.

ME type modular group markers provide flexible solutions for the marking of terminal groups. They are mounted on KD 4 type screwless end bracket and designed in three different sizes.



ME 1-1
Küçük Boy
Small Size



ME 1-2
Orta Boy
Medium Size



ME 2-2
Büyük Boy
Large Size

	496 120	496 130	496 140
BEJ - BEIGE	496 120	496 130	496 140
GRİ - GREY	496 129	496 139	496 149
	DB 5 (Klemsan)	DB 5 (Klemsan)	DB 5 (Klemsan) DB 10/5 (Klemsan) DB 10/6 (Klemsan) DB 10/6.5 (Klemsan)
Miktar / Qty.	25	25	25

Pirinç Rakorlar
Brass Cable Glands

Tip Type	Sipariş No. Cat. No.	Boyutlar / Dimensions (mm)				Miktar Qty.
		Ø d1	Ø d2	Ø d3	h	
RN 9	620 090	11.0	14.5		19	25
RN 11	620 110	14.2	18.4		20	25
RN 13,5	620 135	16.0	20.0		22	20
RN 16	620 160	17.8	22.0		23	20
RN 21	620 210	21.8	28.0		25.5	10
RN 29	620 290	31.4	36.6		28.5	10
RN 36	620 360	41.5	46.6		33	5
RN 42	620 420	47.5	53.6		38	5

Kelepçeli Pirinç Rakorlar / Brass Cable Glands With Clamp



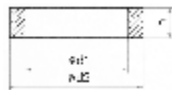
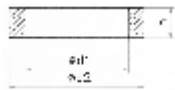
RK 9	621 090	11.0	14.5		27.5	20
RK 11	621 110	14.2	18.4		28.2	20
RK 13,5	621 135	16.0	20.0		30.2	10
RK 16	621 160	17.8	22.0		31.2	10
RK 21	621 210	21.8	28.0		33.5	10
RK 29	621 290	31.4	36.6		38.5	5
RK 36	621 360	41.5	46.6		44	5
RK 42	621 420	47.5	53.6		49	5

Pirinç Rakor Uzatmaları / Brass Enlargers



RU 9	622 090	11.0	14.5		16.5	20
RU 11	622 110	14.2	18.4		17	20
RU 13,5	622 135	16.0	20.0		19	20
RU 16	622 160	17.8	22.0		20	10
RU 21	622 210	21.8	28.0		22	10
RU 29	622 290	31.4	36.6		24.5	5
RU 36	622 360	41.5	46.6		28.5	5
RU 42	622 420	47.5	53.6		32	5

Rakor Contaları / Gland Seals



Tip - Type : A / Tip - Type : B

RCA 9 / RCB 9	625 090 / 626 090	7 / 9	13		4	100
RCA 11 / RCB 11	625 110 / 626 110	9 / 11	16		5	100
RCA 13,5 / RCB 13,5	625 135 / 626 135	12 / 13	18.5		5	100
RCA 16 / RCB 16	625 160 / 626 160	14 / 15	20		5.5	50
RCA 21 / RCB 21	625 210 / 626 210	16 / 20	26		6	50
RCA 29 / RCB 29	625 290 / 626 290	25 / 27	35		8	50
RCA 36 / RCB 36	625 360 / 626 360	30 / 32	45		11	20
RCA 42 / RCB 42	625 420 / 626 420	38 / 40	51		11	20

Kauçuk Rakorlar / Rubber Glands



a = max. 3 mm



RR 11	630 110	10	16	22	13	100
RR 13,5	630 135	14	21	27	17.5	100
RR 16	630 160	17	23.5	29.5	17.5	100
RR 21	630 210	23	29	35	18.5	100
RR 29	630 290	29.5	38	44	21.5	100
RR 36	630 360	39.5	49	55	24.5	50
RR 42	630 420	49.5	59	66	30	50