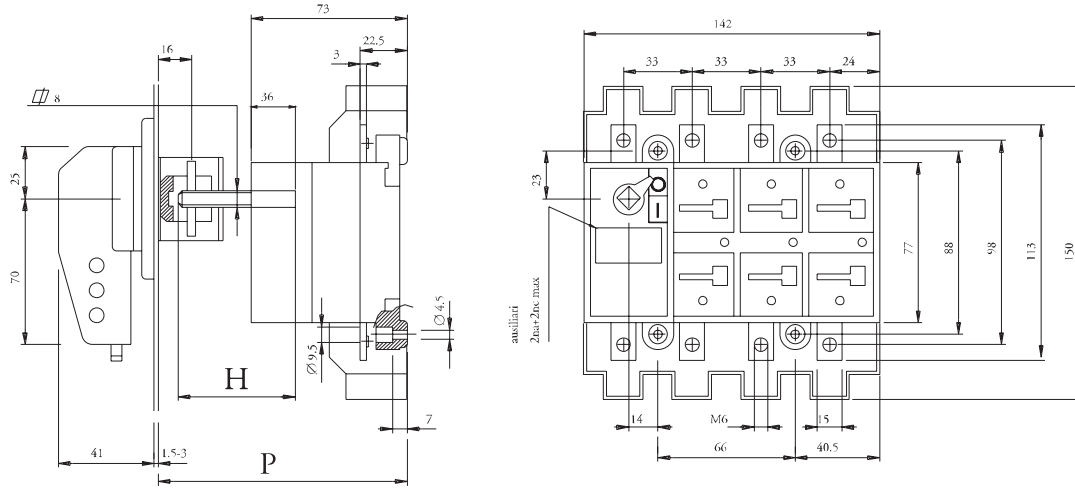
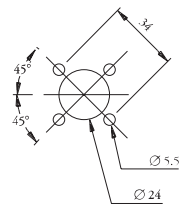
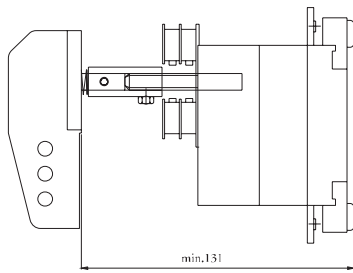


3KA711 comando blocco porta



3KA711 comando diretto

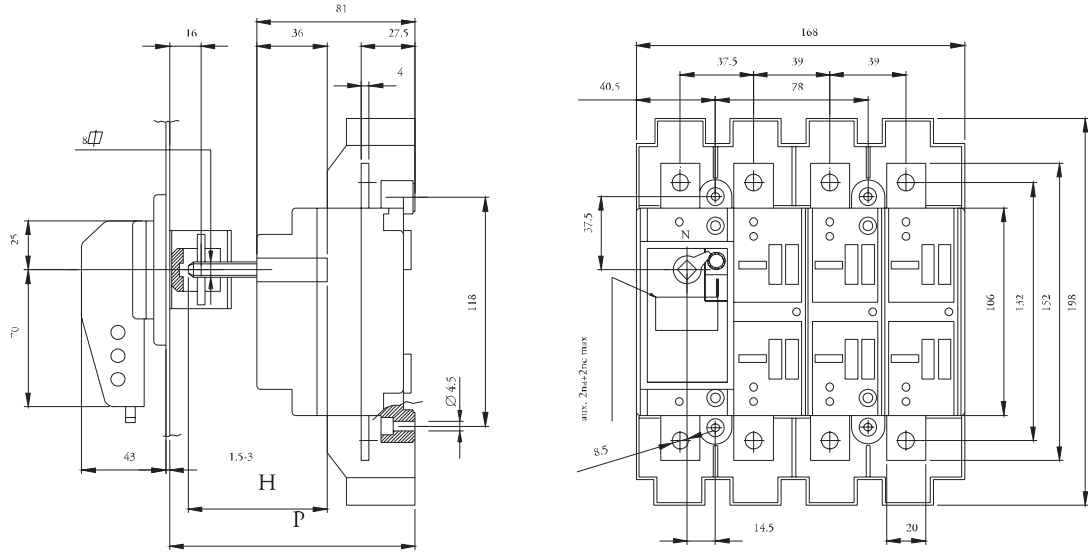


Foratura portella

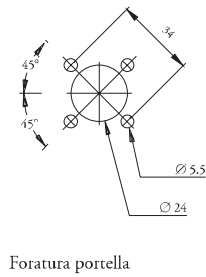
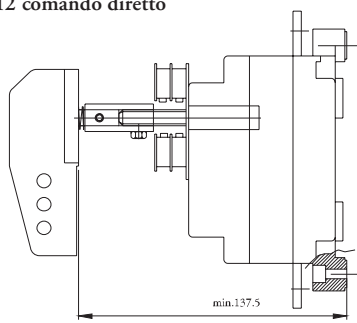
P		C	H
min.	max.		
116	247	47	P-C

C = costante

3KA712 comando blocco porta



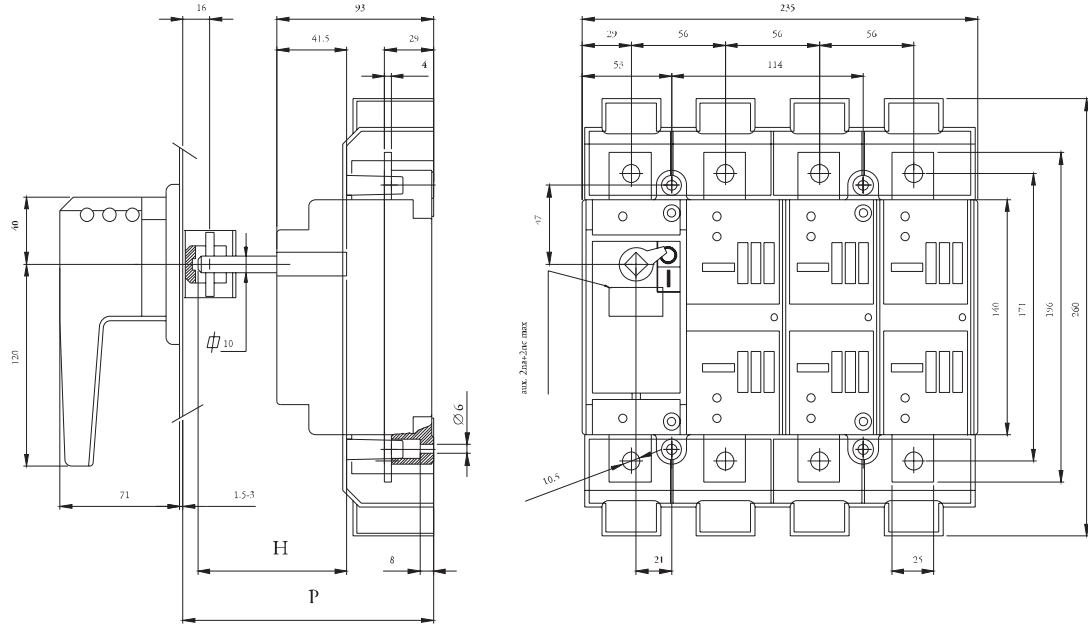
3KA712 comando diretto



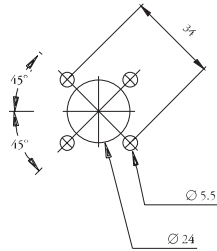
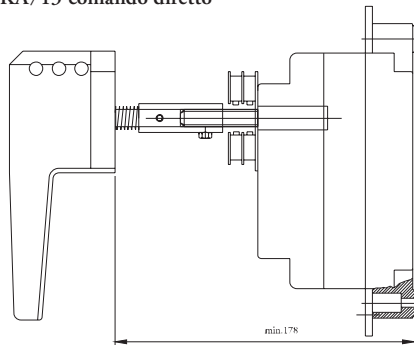
	P	C	H
min.	max.		
124	255	55	P-C

C = costante

3KA713 comando blocco porta



3KA713 comando diretto

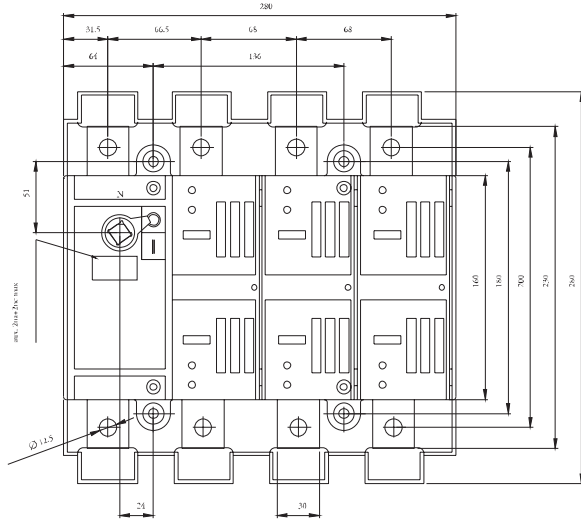
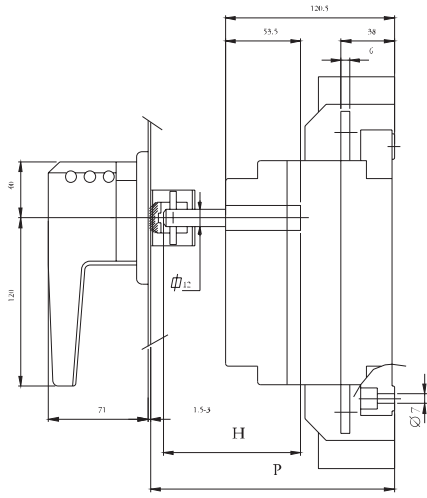


Foratura portella

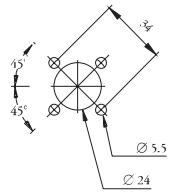
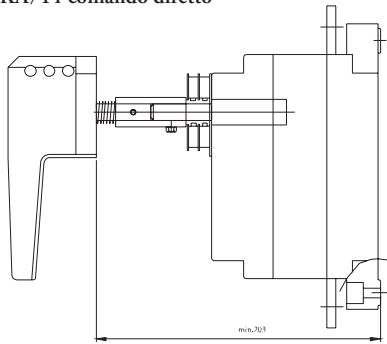
min.	P	max.	C	H
148		261.5	51.5	P-C

C = costante

3KA714 comando blocco porta



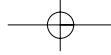
3KA714 comando diretto



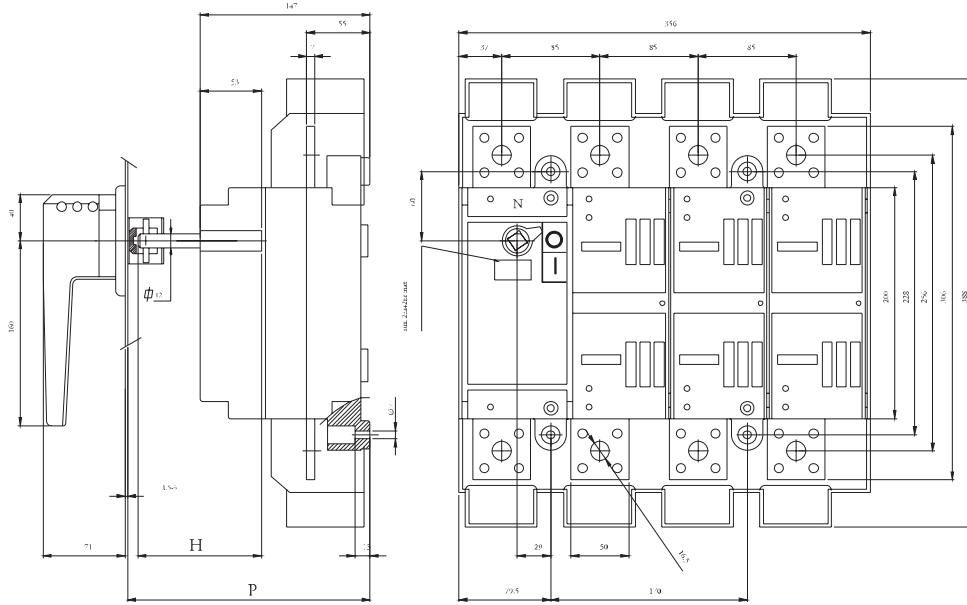
Foratura portella

P		C	H
min.	max.		
174	276	76	P-C

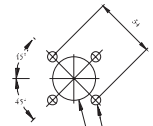
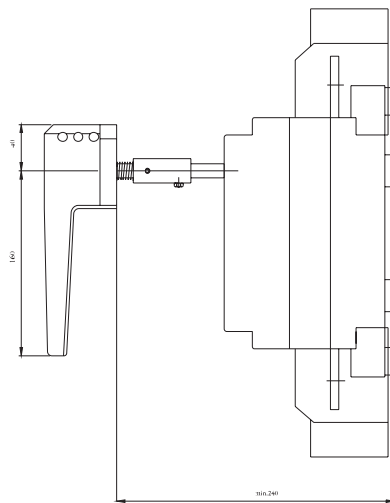
C = costante



3KA715 800-1250A 35KA comando blocco porta



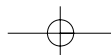
3KA715 800-1250A 35KA comando diretto

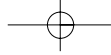


Foratura portella

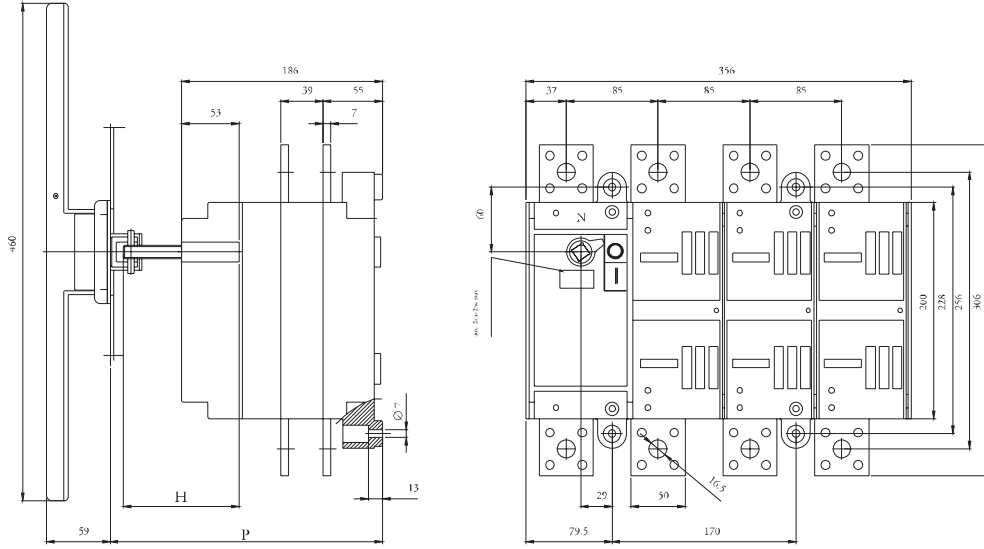
800/1250 35 KA				
min.	P	max.	C	H
215		296	96	P-C

C = costante

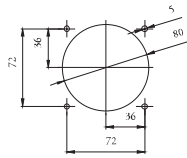
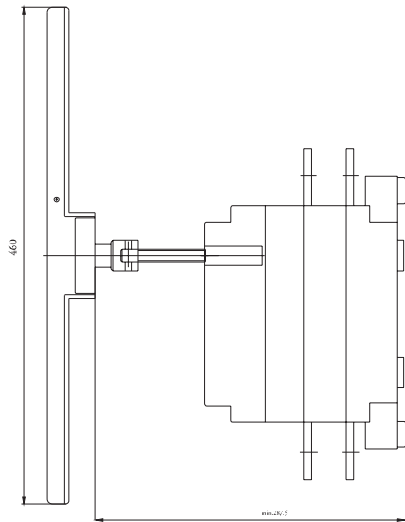




3KA715 1600-2000A comando blocco porta



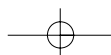
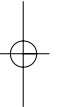
3KA715 1600-2000A comando diretto

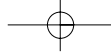


Foratura portella

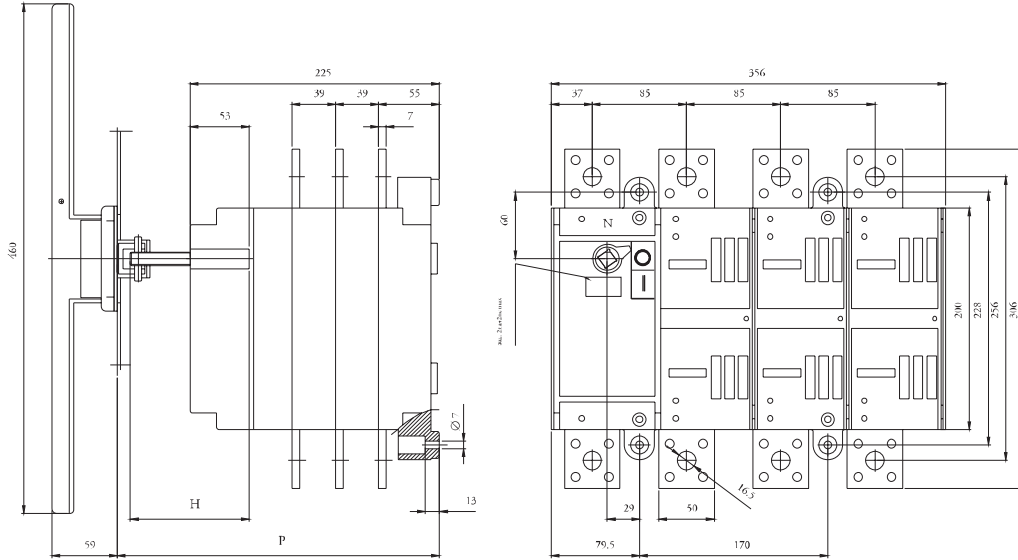
P		C	H
min.	max.		
252	345	145	P-C

C = costante

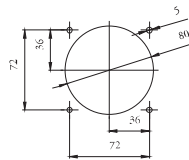
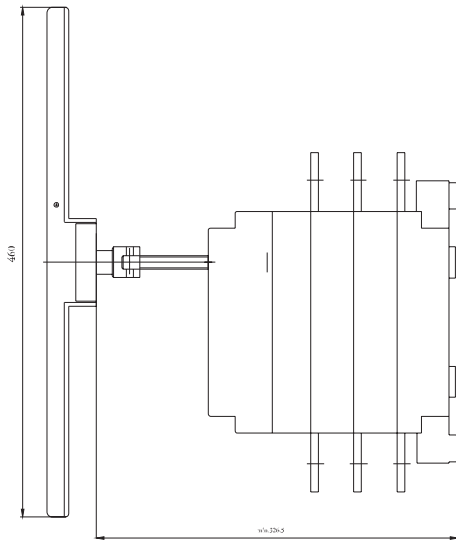




3KA715 2500-3150A comando blocco porta



3KA715 2500-3150A comando diretto



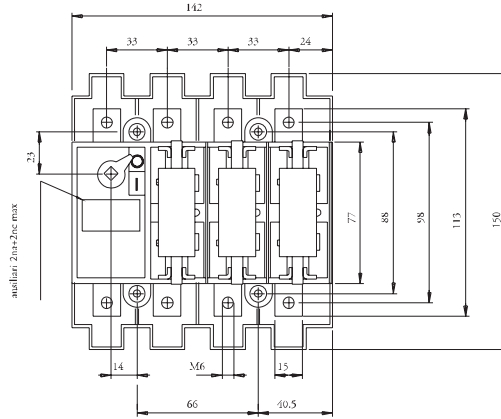
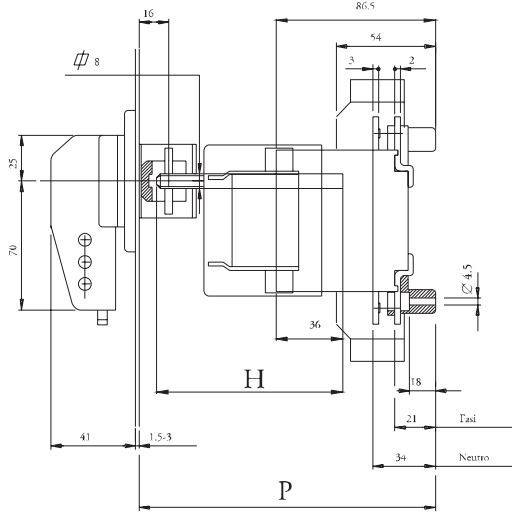
Foratura portella

2500/3150				
min.	P	max.	C	H
291	384	184	P-C	

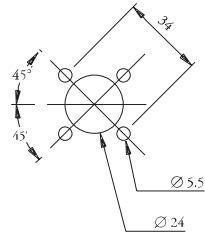
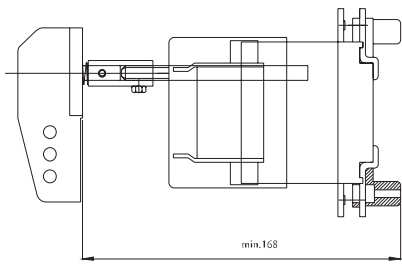
C = costante



3KL711 comando blocco porta



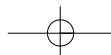
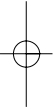
3KL711 comando diretto



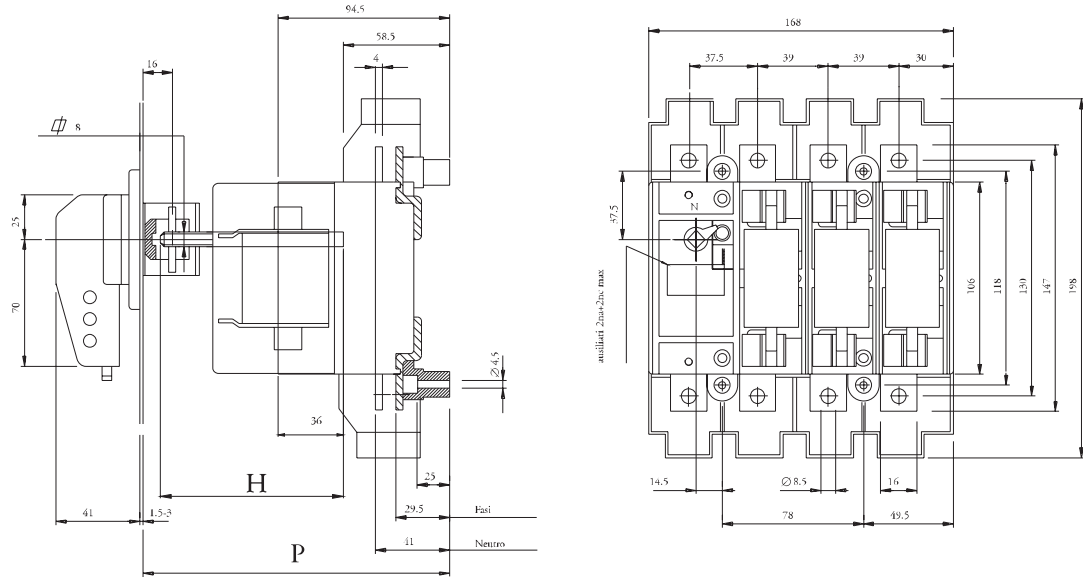
Foratura portella

P		C	H
min.	max.		
157.5	260.5	60.5	P-C

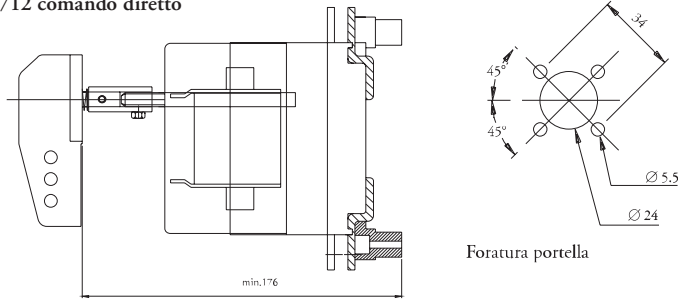
C = costante



3KL712 comando blocco porta



3KL712 comando diretto

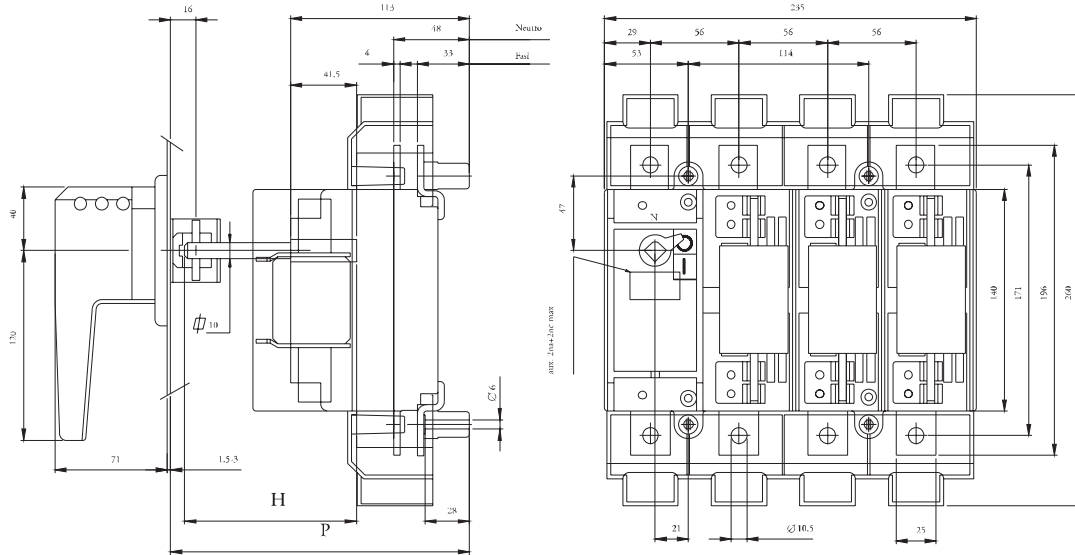


min.	P	C	H
165.5	max. 268.5	68.5	P-C

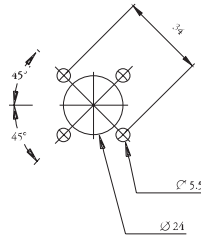
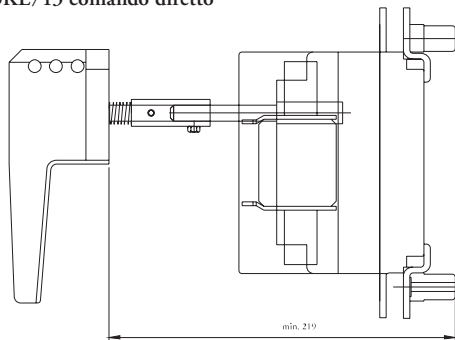
C = costante



3KL713 comando blocco porta

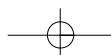


3KL713 comando diretto



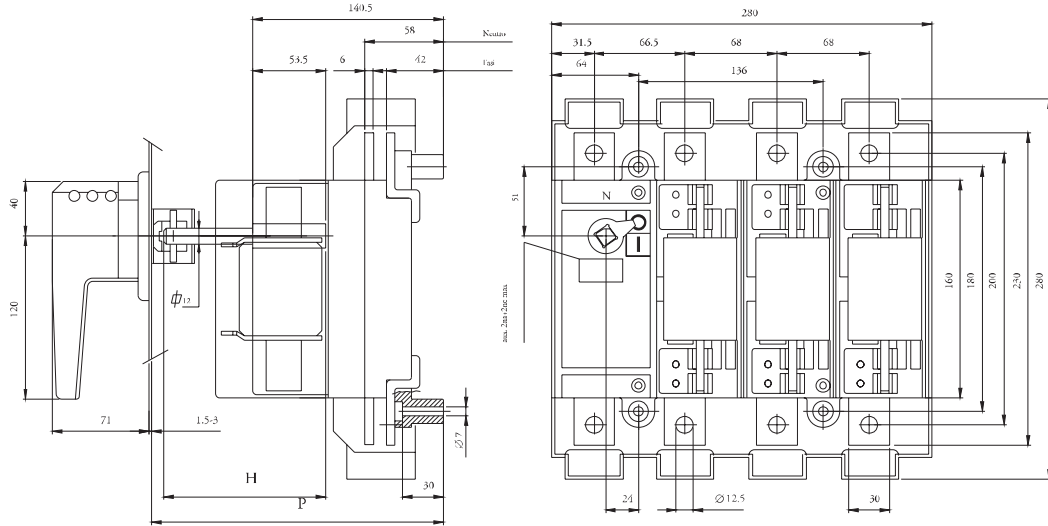
min.	P	max.	C	H
189		280.5	71.5	P-C

C = costante

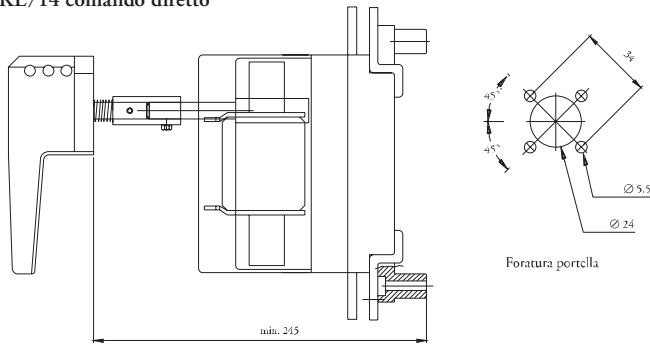




3KL714 comando blocco porta

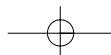


3KL714 comando diretto



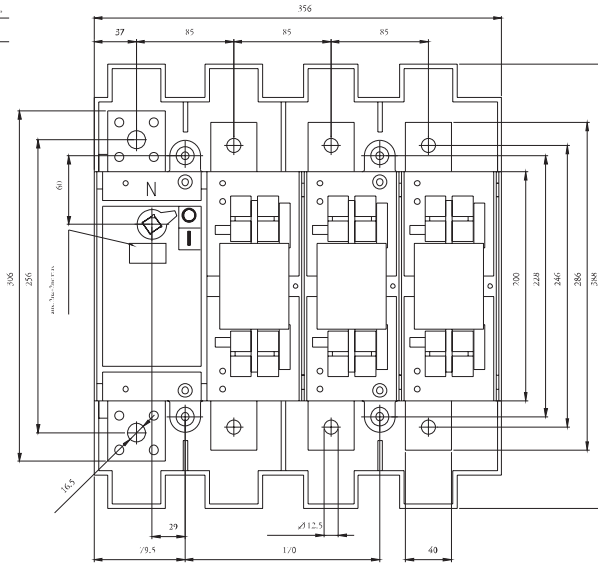
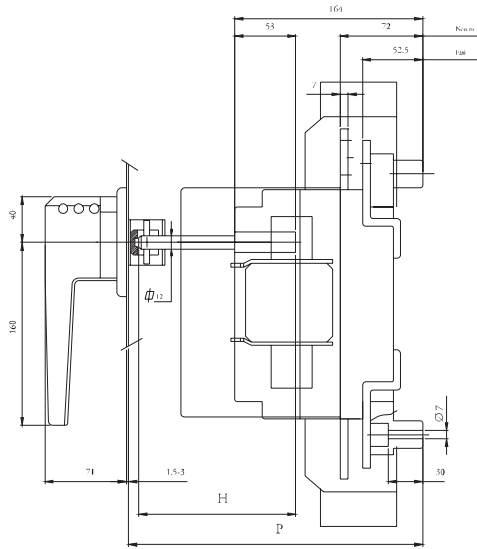
P		C	H
min.	max.		
215	296	96	P-C

C = costante

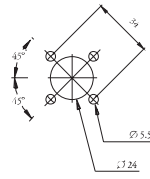
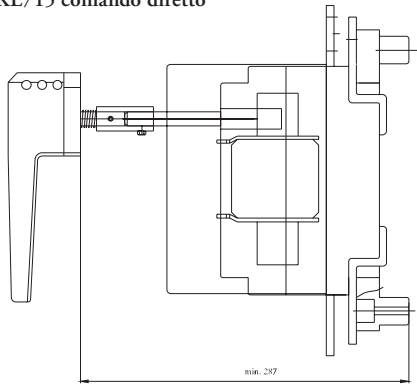




3KL715 comando blocco porta



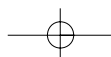
3KL715 comando diretto

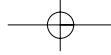


Foratura portella

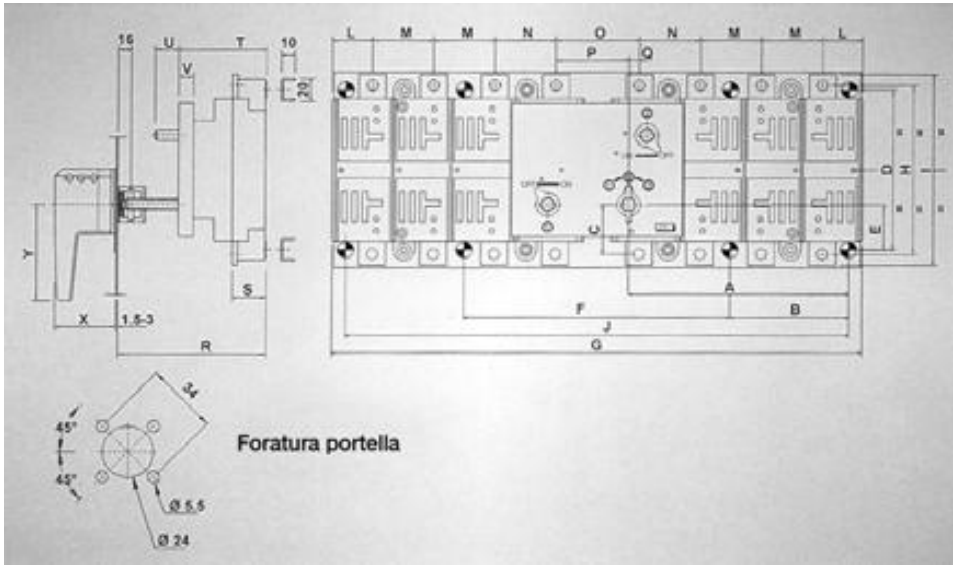
P		C	H
min.	max.		
257	320	120	P-C

C = costante

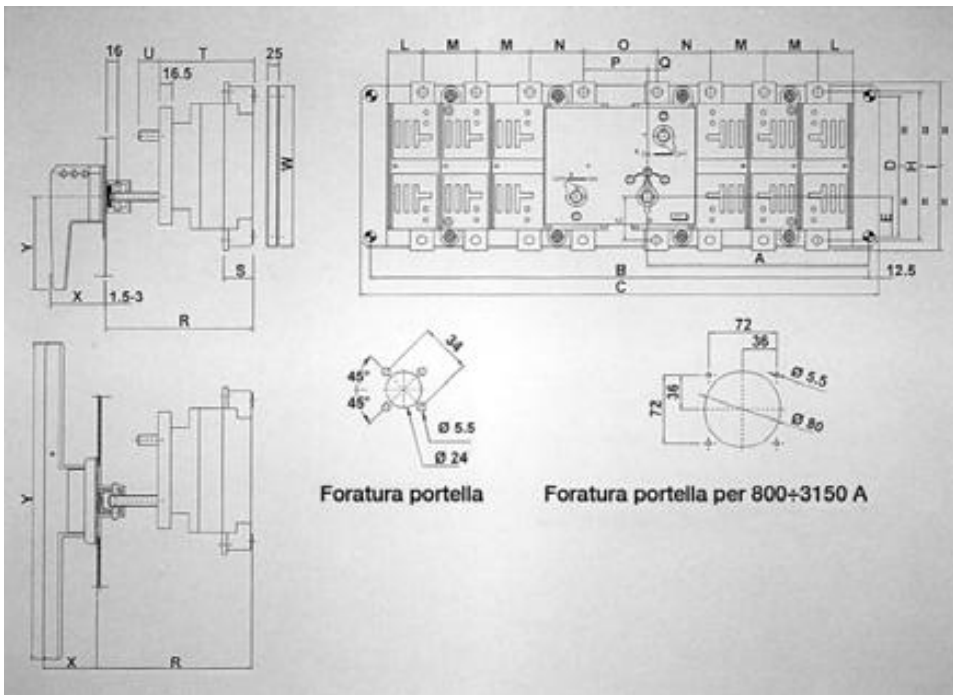




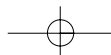
3KA71 - Commutatori orizzontali - 3 e 4 poli



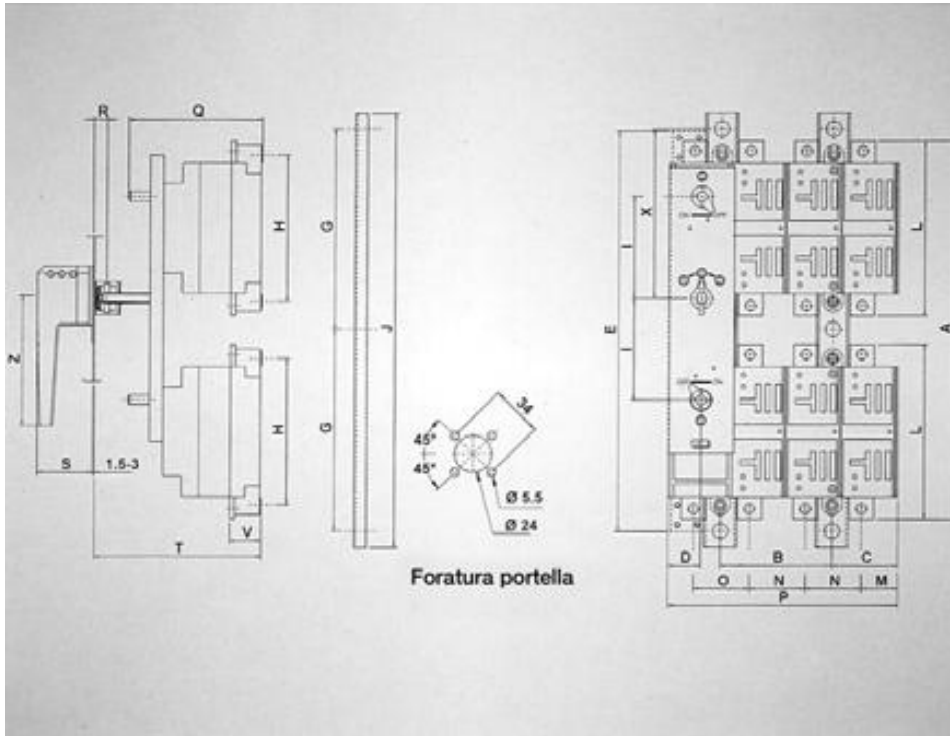
Tipo	A	B	C	D	E	F	G	H	I	J	L	M	N	O	P	Q	R	S	T	U	V	X	Y
3KA711 32 ÷ 125 A	131	46.5	48.5	88	43.5	169	316	98	113	262	24	33	33	70	35	35	161	22.5	90	20	15	41	70
3KA712 160 ÷ 250 A	157.5	66.5	66	118	59	182	359	132	152	315	30	39	37.5	68	34	34	170	27.5	96	20	15	41	70
3KA713 315 ÷ 400 A	199.5	-	54	157	47	-	490.5	171	196	460	38	56	56	78.5	66	12.5	183.5	29	109.5	30.5	16.5	71	120



Tipo	A	B	C	D	E	H	I	L	M	N	O	P	Q	R	S	T	U	W	X	Y
3KA714 630 A	281	655	680	180	51	200	230	46	68	66.5	93	81.5	11.5	207	38	137	24	206	71	160
3KA715 800 ÷ 1250 A	322	719	744	228	80	256	306	64	85	85	106	90	16	236	55	163.5	36	254	59	460
3KA715 1600 ÷ 2000 A	322	719	744	228	80	256	306	64	85	85	106	90	16	275	55	202.5	36	254	59	460
3KA715 2500 ÷ 3150 A	322	719	744	228	80	256	306	64	85	85	106	90	16	314	55	241.5	36	254	59	460

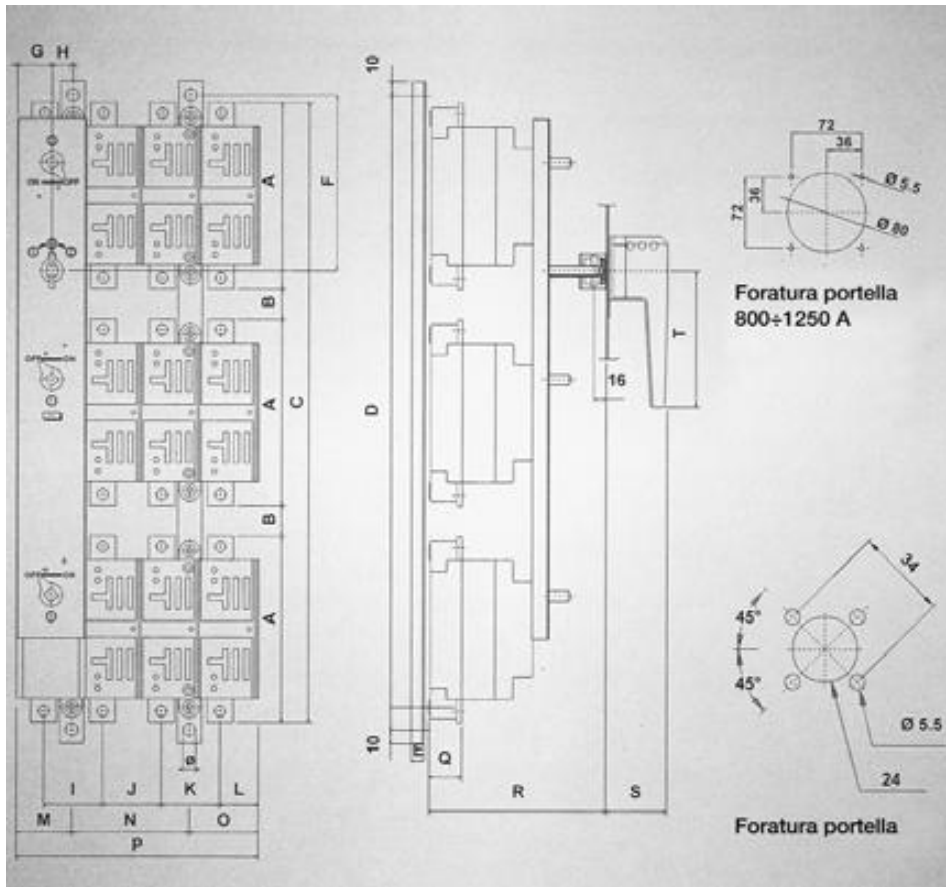


3KA71 - Commutatori verticali - 3 e 4 poli



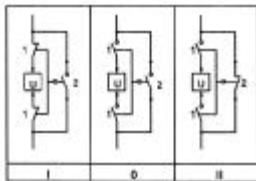
Tipo	A	B	C	D	E	G	H	I	J	L	M	N	O	P	Q	R	S	T	V	X	Z
3KA711 32 ÷ 125 A	253	66	40.5	25	-	131	88	70	282	113	24	33	33	145.5	110	16	41	174	21	106.5	70
3KA712 160 ÷ 250 A	317	78	49.5	26	-	157.5	118	85	335	147	30	39	37.5	168	116	16	41	182	29.5	125	70
3KA713 315 ÷ 400 A	436	114	68	35	-	230	157	120	480	196	38	56	56	243.5	140	16	71	202.5	31	201	120
3KA714 630 A	480	136	80	40	-	235	180	125	490	215	46	68	66.5	280	161	16	71	226	42	193	160
3KA715 800 ÷ 1250 A	676	170	106.5	50.5	686	319	228	185	658	286	64	85	85	356	199.5	16	71	253	52.5	257	130.5

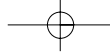
3KA71 - By-pass verticale - 3 e 4 poli



Tipo	A	B	C	D	E	F	G	H	I	J	K	L	M	N	O	P	Q	R	S	T	Ø
3KA711 32 ÷ 125 A	113	30	399	422	10	110	25	14	33	33	33	24	39	66	40.5	145	22.5	161	41	70	9
3KA712 160 ÷ 250 A	152	18	492	422	10	140	26	14.5	37.5	39	39	30	40.5	78	49.5	168	27.5	170	71	120	9
3KA713 315 ÷ 400 A	196	44	676	697	10	187	35	35	56	56	56	38	70	114	68	235	29	183.5	71	160	11
3KA714 630 A	230	20	730	940	15	196	40	24	66.5	68	68	46	64	136	80	280	38	207	71	130x2	11
3KA715 800 ÷ 1250 A	306	64	1046	1028	15	265	50.5	29	85	85	85	64	79.5	170	106.5	356	55	236	88	230x2	11

Schema elettrico

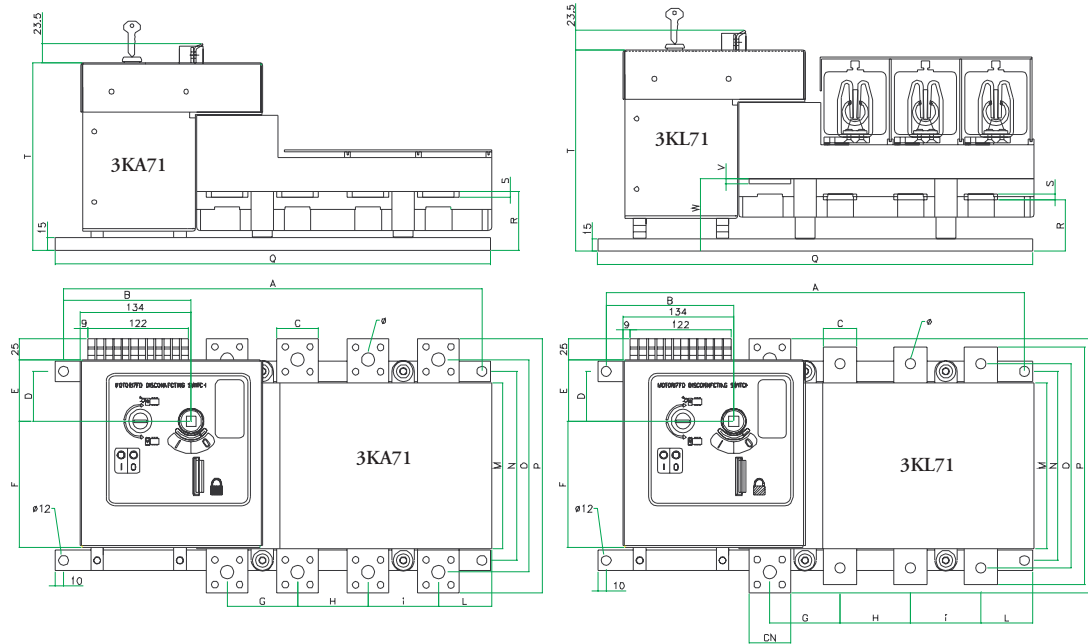




Sezionatori con comando motori

Dimensioni

Tipo	A	B	C	CN	D	E	F	G	H	I	L	M	N	O	P	Q	R	S	T	U	V	W	Ø
3KA713 315 ÷ 400 A	398.5	148.5	25	25	47	74	152	56	56	56	38	140	157	171	196	418.5	86.5	4	218	-	-	-	10.5
3KL713 200 ÷ 250 A	398.5	148.5	25	25	47	74	152	56	56	56	38	140	157	171	196	418.5	71.5	4	218	-	4	86.5	10.5
3KA714 630 A	436	149	30	30	51	74	152	66.5	68	68	36	160	180	200	230	456	67.5	6	218	-	-	-	12.5
3KL714 315 ÷ 400 A	436	149	30	30	51	74	152	66.5	68	68	36	160	180	200	230	456	51.5	5	218	-	5	67.5	12.5
3KA715 800 ÷ 1250 A	505	154	50	50	60	74	152	85	85	85	64	200	228	257	307	525	67	7	229	-	-	-	16
3KL715 630 ÷ 800 A	505	154	40	50	60	74	152	85	85	85	64	200	228	257	307	525	65	7	246	307	7	84	12.5
3KA715 1600 ÷ 2000 A	505	154	50	50	60	74	152	85	85	85	64	200	228	257	307	525	-	7	268	-	-	-	16
3KA715 2500 ÷ 3150 A	505	154	50	50	60	74	152	85	85	85	64	200	228	257	307	525	-	7	307	-	-	-	16



Schema morsetteria

