

Planning and Configuration with SIRIUS

13



13/2 **Motor starter ES**

13/3 **ECOFAST ES**

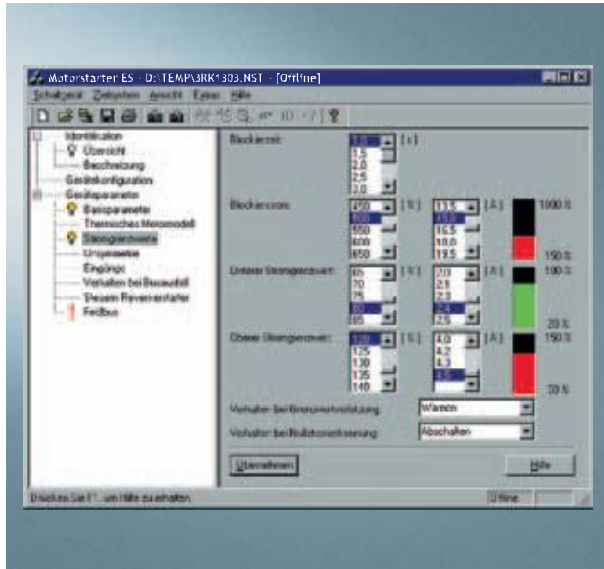
13/4 **SIMOCODE ES**



Planning and Configuration with SIRIUS

Motor starter ES

Overview



Switch ES motor starter is used for start-up, parameterization, diagnostics, documentation and the preventative maintenance of the High Feature motor starters of the SIMATIC ET 200S and ECOFAST product families.

Interfacing is performed

- Either through the serial device interface (applicable to ET 200S/ECOFAST) or
- With PROFIBUS DP V1 capable motor starters from any point in PROFIBUS (for ECOFAST).

Using Switch ES motor starter, the communication capable motor starters are easily parameterized during start-up, monitored during normal operation and successfully diagnosed for service purposes. Preventative maintenance is supported by a function for reading out diverse statistical data (e.g. operating hours, operating cycles, cut-off currents, etc.). The user is supported during these procedures with comprehensive Help functions and plain text displays.

Switch ES motor starter can either be used as a stand-alone program or it can be integrated into STEP 7 V5.1 SP3 upwards by means of an object manager.

The following components are required for a serial connection:

ET200S motor starters, High Feature:

- 2DI 24V COM control module
- LOGO PC cable

ECOFAST motor starters, High Feature:

- 3RK1911-0BN20 cable

Selection and ordering data

Version	DT	Order No.	Price per PU	PU (UNIT, SET, M)	PS*	PG	Weight per PU approx. kg
Switch ES motor starter comprising:	B	3ZS1 310-0CC20-0YA0		1	1 unit	121	0.230
<ul style="list-style-type: none"> • Switch ES motor starter For parameterizing, monitoring, diagnosing and testing the ECOFAST motor starters and SIMATIC ET200S High Feature starters with Online Help German/English selectable Tested for execution under Windows 2000/XP System requirements: PROFIBUS DP interface: CP 5411 (ISA), CP 5412 (ISA), CP 5511 (PCMCIA), CP 5611 (PCI), Smart Cable for serial communication through a serial interface and teleservice, CP 5613 and CP 5614 (new CP card) and MPI interface on PG7xx and its driver software, CD-ROM drive • STEP 7 Object Manager For integrating the ECOFAST starter as S7 slave in SIMATIC S7 For calling Switch ES from SETP 7 System requirements: SIMATIC S7/M7/C7/PCS7, STEP 7 (Version 5.0 or higher), CD-ROM drive 							

Overview

ECOFAST ES configuring tool

The ECOFAST system is an open and innovative system solution for distributed applications and sets new standards in equipping machines and plants for automation, low-voltage controlgear and drives. The system therefore offers a high degree of safety and availability during operation in addition to high time and cost savings during planning and commissioning/installation.

The convenient ECOFAST ES configuration software reduces configuring times even further and enables reliable configuring right from the start. ECOFAST ES reduces errors and effort during configuring, calculating and documenting of applications.

ECOFAST ES provides the following advantages:

- Graphic user interface for selecting and interconnecting stations on the power bus
- The components are identified down to the unique order number and entered in parts/quantity lists
- Automatic interface and function testing by means of logic rules (e.g. motor braking units, selectivity, etc.)
- Cable characteristics and laying specifications are taken into account in the calculation
- Plug-in connections are adapted automatically
- The software finally calculates and checks the configuration according to currently valid rules and state of the art
- If necessary, an error list with hints for possible solutions (On line help) can be output
- The configuration can be optimized automatically

Selection and ordering data

Version	DT	Order No.	Price per PU	PU (UNIT, SET, M)	PS*	PG	Weight per PU approx. kg
ECOFAST ES, basic package V1.3	B	3ZS1 200-0CC13-0YA0		1	1 unit	121	0.100
Graphic configuring tool for SIRIUS drive solutions <ul style="list-style-type: none"> • Operator prompting for selecting products • Configuring the supply system according to standards • Documentation, parts lists, quantity lists 							

* You can order this quantity or a multiple thereof.

Planning and Configuration with SIRIUS

SIMOCODE ES

Overview

SIMOCODE ES

SIMOCODE ES is the central software for SIMOCODE pro start-up, operation and diagnostics. Two versions are available:

- **SIMOCODE ES Professional** for connection to one or several devices through PROFIBUS DP or point-to-point directly on the device through the system interface
- **SIMOCODE ES Smart** for direct connection to SIMOCODE pro through the system interface on the device

SIMOCODE ES Professional

SIMOCODE ES Professional provides convenient configuration and diagnostics of SIMOCODE pro from a central position through PROFIBUS. By displaying all operating, service and diagnostics data, SIMOCODE ES supplies important information when maintenance work is required or in the event of a fault, thus helping to prevent faults or to localize and rectify them once they have occurred. Unnecessary plant downtimes are prevented by being able to change parameters online even during operation.

The following information is just an excerpt of that presented in clearly arranged dialogs:

- Warnings, faults, signals
- Measured values and measurement curves
- Operating hours, downtimes etc.
- Fault protocol

Control functions, protection functions and the wiring of the control circuit are implemented in SIMOCODE pro on a software basis and are configured with SIMOCODE ES.

Using the OM SIMOCODE pro object manager, which forms part of SIMOCODE ES Professional, SIMOCODE ES Professional can be integrated in and activated from SIMATIC STEP 7. This allows easy and S7-consistent configuration and device parameterization. Hence SIMOCODE pro is totally integrated in SIMATIC S7.

The advantages at a glance

- Easy parameterization reduces the amount of engineering work and shortens start-up times
- Clearly arranged plant documentation by graphic display (SIMOCODE ES Graphic)
- Detailed information, also when there are faults, is a help for maintenance personnel and shortens downtimes
- Stand-alone version and integration in SIMATIC STEP 7 enable universal use
- Parameters can be changed even during operation
- Consistent data storage and easy configuration thanks to integration in TIA (Totally Integrated Automation)

SIMOCODE ES Smart

Ergonomically designed tools are required for the time-saving start-up of a switchboard. SIMOCODE ES Smart provides the user with the same functions as SIMOCODE ES Professional. The only difference is: Parameterizing takes place directly on the device.

SIMOCODE ES Smart is provided by SIMOCODE pro to serve as a user-friendly and clearly arranged interface for direct parameterization and start-up on the device. The integrated, flexible printing function allows comprehensive plant documentation or partial documentation of selected or changed parameters.

SIMOCODE ES Graphic

This software package can be used together with SIMOCODE ES Smart/Professional.

SIMOCODE ES Graphic expands the user interface of SIMOCODE ES Smart/Professional with a graphical editor and thus supports extremely ergonomic and user-friendly parameterization with Drag & Drop.

Inputs and outputs of function blocks can be graphically wired and parameters can be set. The configured functions can be described in greater detail using random comments and the device parameterization can be documented graphically – this speeds up start-up and simplifies the documentation.

Selection and ordering data

Version	DT	Order No.	Price per PU	PU (UNIT, SET, M)	PS*	PG	Weight per PU approx. kg
SIMOCODE ES Smart Parameterization and service software for SIMOCODE pro for parameterizing through the system interface on the device Executes on PC/PG under Windows 2000/XP, without PC cable Type of supply: CD, single license	A	3ZS1 312-1CC10-0YA0		1	1 unit	131	0.230
SIMOCODE ES Professional Parameterization and service software for SIMOCODE pro for parameterizing over PROFIBUS or the system interface on the device, including STEP 7 object manager Executes on PC/PG under Windows 2000/XP, without PC cable Type of supply: CD, single license	A	3ZS1 312-2CC10-0YA0		1	1 unit	131	0.230
SIMOCODE ES Graphic Optional expansion of SIMOCODE ES Smart/ Professional with a graphical editor for user-friendly parameterization by means of Drag & Drop Requirements (minimum): Installed SIMOCODE ES Smart 2004 with SP1 or installed SIMOCODE ES Professional 2004 with SP1	A	3ZS1 312-3CC10-0YA0		1	1 unit	131	0.230